

ENTWINED

August 29 – October 5, 2023

Serena Chopra



Shinrin #1, Binsar, Kumaon Himalayas, India, 2019

Gelatin Silver Print

32 x 40" / Edition of 3 with 2 AP

40 x 50" / Edition of 2 with 2 AP

19 x 24" / Edition of 5 with 2 AP



Shinrin #17, Binsar, Kumaon Himalayas, India, 2019

Gelatin Silver Print

19 x 24" / Edition of 5 with 2 AP



Shinrin #5, Binsar, Kumaon Himalayas, India, 2020

Gelatin Silver Print

19 x 24" / Edition of 5 with 2 AP



Shinrin #48, Binsar, Kumaon Himalayas, India, 2019

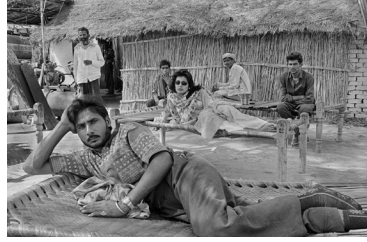
Gelatin Silver Print

19 x 24" / Edition of 5 with 2 AP

32 x 40" / Edition of 3 with 2 AP

40 x 50" / Edition of 2 with 2 AP

Pamela Singh



The Lorry Driver, 1994-1995

Gelatin Silver Print

6 x 9" (8 x 10" paper) / Edition of 7

Signed in ink with title, date, and edition number on archival label verso

SEP3783



Transvestites at a Religious Festival in South India, 1994

Gelatin Silver Print

16.75 x 11" (16 x 20" paper) / Edition of 7

SEP3783



Monkey Do, 1994-1995

Gelatin Silver Print

6 x 9" (8 x 10" paper) / Edition of 7

Signed in ink with title, date, and edition number on archival label verso

SEP3772



Treasure Map 004, 2015

Painted Archival Digital Print on

Hahnemühle Watercolor Paper

5.25 x 8" (8.5 x 11" paper) / Unique

Signed in pencil and date on face below image

Image 1994-95, painted 2015

SEP3839



Vimla Bhaguna teaching Gandhian principles at her school from Chikpo Tree Huggers of the Himalayas, 1993

Gelatin Silver Print

16.75 x 11" (16 x 20" paper) / Edition of 7



Treasure Map 024, 2015

Painted Archival Digital Print on

Hahnemühle Watercolor Paper

8 x 5.25" (11 x 8" paper) / Unique

Signed in pencil and date on face below image

Image 1994-95, painted 2015

SEP3831



The Pigeon, 1994-1995
Gelatin Silver Print
6 x 9" (8 x 10" paper) / Edition of 7
Signed in ink with title, date, and edition number on
archival label verso
SEP3778



Treasure Map 029, 2015
Painted Archival Digital Print on
Hahnemühle Watercolor Paper
8 x 5.25" (11 x 8" paper) / Unique
Signed in pencil and date on face below image
Image 1994-95, painted 2015
SEP3833



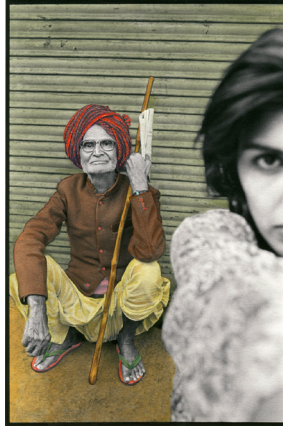
*Widows, previously child widows,
chant in an Ashram, Brindavan, 1995*
Gelatin Silver Print
16.75 x 11" (16 x 20" paper) / Edition of 7



The Beggar's Purse, 1994-1995
Gelatin Silver Print
9 x 6" (10 x 8" paper) / Edition of 7
Signed in ink with title, date, and edition
number on archival label verso
SEP3786



*Women of the Chipko Movement spinning
wool carpets from Chikpo Tree Huggers of
the Himalayas, 1994*
Gelatin Silver Print
16.75 x 11" (16 x 20" paper) / Edition of 7



Treasure Map 029, 2015
Painted Archival Digital Print on
Hahnemühle Watercolor Paper
8 x 5.25" (11 x 8" paper) / Unique
Signed in pencil and date on face below image
Image 1994-95, painted 2015
SEP3832

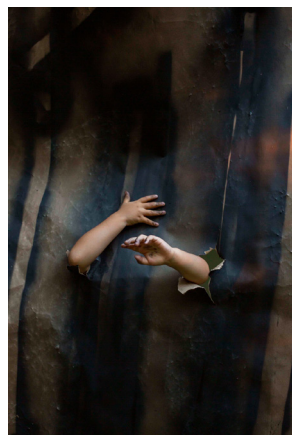


The Young One, 1994-1995
Gelatin Silver Print
6 x 9" (8 x 10" paper) / Edition of 7
Signed in ink with title, date, and edition number on
archival label verso
SEP3780

Qiana Mestrich



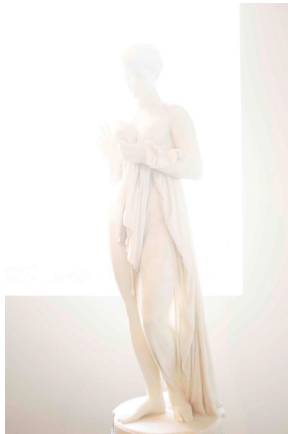
A Blanketing, Nearly Invisible Pressure
from *Thrall*, 2020
Archival Inkjet Print
12 x 18" (13 x 19" paper) / Edition of 2 with 2 AP



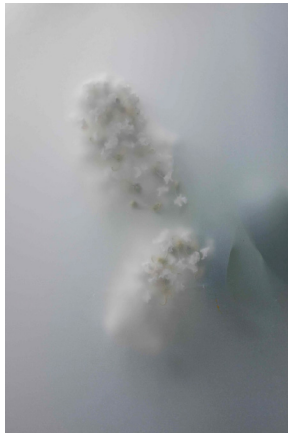
Not Coming Back Whole from *Thrall*, 2020
Archival Inkjet Print
12 x 18" (13 x 19" paper) / Edition of 2 with 2 AP



Strange Bush from *Thrall*, 2018
Archival Inkjet Print
12 x 18" (13 x 19" paper) /Edition of 2 with 2 AP



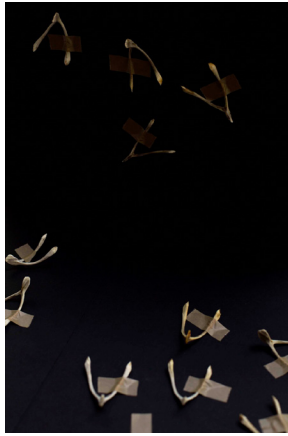
Pandora's Misfortune from *Thrall*, 2018
Archival Inkjet Print
12 x 18" (13 x 19" paper) /Edition of 2 with 2 AP



Frost (Botanical) from *Thrall*, 2017
Archival Inkjet Print
12 x 18" (13 x 19" paper) /Edition of 2 with 2 AP



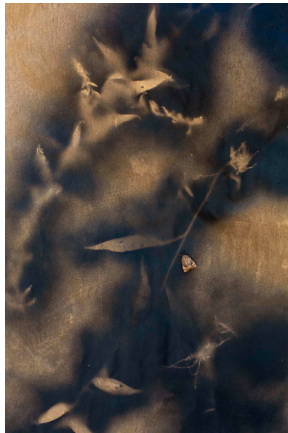
Of Coral and Labor from *Thrall*, 2019
Archival Inkjet Print
12 x 18" (13 x 19" paper) /Edition of 2 with 2 AP



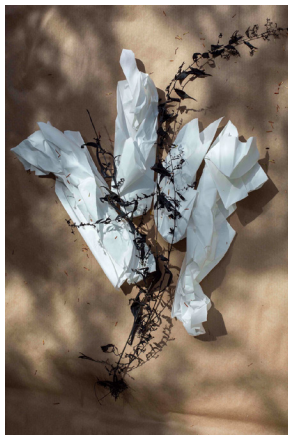
Dreams Never Promised from *Thrall*, 2020
Archival Inkjet Print
12 x 18" (13 x 19" paper) /Edition of 2 with 2 AP



The Right to Wear War from *Thrall*, 2020
Archival Inkjet Print
12 x 18" (13 x 19" paper) /Edition of 2 with 2 AP



Camouflage from *Thrall*, 2020
Archival Inkjet Print
12 x 18" (13 x 19" paper) /Edition of 2 with 2 AP



Mourning Weeds from *Thrall*, 2020
Archival Inkjet Print
12 x 18" (13 x 19" paper) /Edition of 2 with 2 AP

Gayatri Ganju



Quick Step from *The Girl Who Cried Wolf*, 2016
Archival Inkjet Print
24 x 30" / Edition of 3 with 1 AP



The wolf was here from *The Girl Who Cried Wolf*, 2016
Archival Inkjet Print
20 x 25" / Edition of 3 with 1 AP



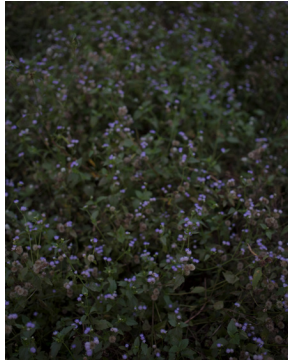
Marks from *The Girl Who Cried Wolf*, 2016
Archival Inkjet Print
10 x 8" / Edition of 3 with 1 AP



The long sleep from *The Girl Who Cried Wolf*, 2016
Archival Inkjet Print
15 x 18.75" / Edition of 3 with 1 AP



Before the beginning there was an end
from *The Girl Who Cried Wolf*, 2016
Archival Inkjet Print
36 x 45" / Edition of 3 with 1 AP



Dream from *The Girl Who Cried Wolf*, 2016
Archival Inkjet Print
12 x 15" / Edition of 3 with 1 AP



Nightmare from *The Girl Who Cried Wolf*, 2016
Archival Inkjet Print
12 x 15" / Edition of 3 with 1 AP



Heat from *The Girl Who Cried Wolf*, 2016
Archival Inkjet Print
18 x 14.4" / Edition of 3 with 1 AP